

UNITE® 160 4K Camera



Professional grade 4K USB PTZ camera for conference rooms, web conferencing UC applications and more.

Smart Face Tracking or Auto Framing

AI processing optionally tracks an individual or frames an entire group for perfect framing and focus.

- > 4K Ultra HD video, 12x optical zoom, capability to capture all participants in the room.
- > Transforms any meeting room into a professional grade video collaboration room.
- > Control the camera's functions via IR remote, RS-232, or UVC protocol.
- > Super-high SNR with advanced 2D and 3D noise reduction.
- > Compatible with popular applications such as Zoom, WebEx, Google® Meet™, and more.



APPLICATIONS:

- Camera Tracking for Lecture Capture
- Web Conferencing
- Unified Communications

WORKSPACES:

- Conference Rooms
- Executive Offices
- Training Centers
- Classrooms

Multiple Control Options

Simple USB 3.0/2.0 compatibility with UVC and UAC protocols support.

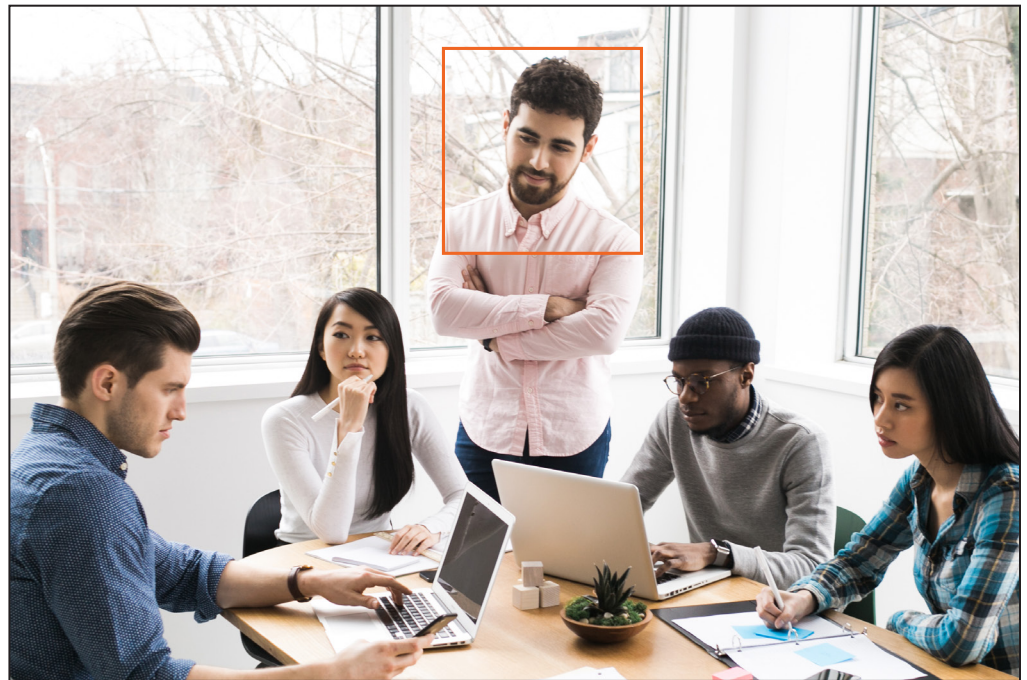
Elevate Your Collaboration

Different Tracking Modes



Auto Framing

Detects participant or group participants and automatically frames the image.



Smart Face Tracking

Ideal to follow only the person who is moving. The moving person being tracked doesn't have to be the speaker. It is possible to change the person during the connection.

UNITE® 160 4K Camera

Camera

- Video System:
 - 2160p30
 - 1080p30
 - 1080p25
 - 720p30
 - 720p25
- Sensor: 1/2.5 inch, CMOS
- Effective Pixels: 8.51 Million
- Scanning Mode: Progressive
- Lens: 12x maximum zoom, Focal length: 4.4 mm - 52.8 mm, F1.8 - F2.6
- Minimal Illumination: 0.5 Lux @ (F1.8, AGC ON)
- Shutter: 1/30s – 1/10000s
- White Balance: Automatic, indoor, outdoor, one-button, manual, specified color
- Backlight Compensation: Supported
- Digital Noise Reduction: 2D & 3D
- Video S/N: ≥55dB
- Horizontal Angle of View: 71° – 8.2°
- Vertical Angle of View: 42.7° – 4.5°
- Horizontal Rotation Range: ±170°
- Vertical Rotation Range: -30° – +90°
- Pan Speed Range: 2.7° – 35.7°/s
- Tilt Speed Range: 2.7° – 31.5°/s
- H & V Flip: Supported
- Image Freezing: Supported
- Number of Presets: 255
- Flexible Installation: Standard mount, upside-down mount

Input/Output Interface

- Audio Interface: 3.5 mm connector, Line In
- USB Interface: 1 way, USB 3.0, Type C Socket
- 1 x RS232: 8pin Min DIN; Max. Distance: 30 m; Protocol: VISCA/Pelco-D/Pelco-P
- 1 x RS485: 2pin phoenix port; Max. Distance: 1200 m; Protocol: VISCA/Pelco-D/Pelco-P

USB Features

- Operating Systems: Windows 7 and later
- Color System: YUY2 / MJPEG
- USB 2.0: 720P30 maximum
NOTE: Use of USB 2.0 downgrades video quality. ClearOne does not recommended USB 2.0 extenders
- USB Video Communication: UVC 1.1
- Audio on USB: Supported
- UVC PTZ: Supported

Power

- Power Jack: JEITA type (DC In 12V)
- Input Voltage: DC 12V
- Current Consumption: 1.0A (max)
- Power Consumption: 12W (max)

Environmental

- Operating Temperature: 14°F–104°F (-10°C – 40°C)
- Storage Temperature: -40°F – 140°F (-40°C – 60°C)
- MTBF: >30000h

Mechanical

- Dimensions: 5.67" x 5.67" x 6.61" (143.88mm x 144mm x 168.25mm)
- Weight: 3.5lb (1.6Kg)

Part Number

- 910-2100-012

Optional Accessories

- 910-2100-104: Wall Mount for UNITE 150 Camera
- 910-2100-204: Ceiling Mount for UNITE 150 Camera
- 910-3200-702-30: USB 3.0 cable

SALES AND INQUIRIES**Headquarters**

5225 Wiley Post Way
Suite 500
Salt Lake City, UT 84116

US & Canada

Tel: 801.975.7200

International

Tel: +1.801.975.7200

Sales

Tel: 801.975.7200
sales@clearone.com

TechSupport

Tel: 801.974.3760
videotechsupport@clearone.com